

STORMWATER SYSTEMS

APRIL NEWSLETTER

| [New Rota Moulding Machine](#) | [NEW: Project Manager of the Month Award](#) | [Moving Premises](#) | [Low Dam Levels](#) | [New General Manager](#) | [Job Opportunities](#) |

We're Getting Fancy - New Rota Moulding Machine!



To ensure that we can keep up with the increasing demand for Aquacomb and the upcoming FenceTank, we have partnered with an additional supplier here in Auckland to import this beauty! Our new state of the art machine has three production heads and a robotic moving oven, so it has the capability to double our production capacity over the next few months. This means we won't have the huge lead times you may be experiencing with some other tank products. This machine features all the

bells and whistles, including an air scrubber (as pictured to the right). The air scrubber uses ultraviolet filters before expelling fumes into the atmosphere - we think this is awesome as it helps us ensure we are maintaining our environmental values. This machine enables us to continue our exceptional growth to meet exacting standards.



New General Manager - Philip Kingston



We are pleased to welcome Philip Kingston to our rapidly growing team! Philip is our new General Manager and will be responsible for overseeing the day to day operations of Stormwater Systems. Philip said he has *"spent a lot of time in various sales/financial/operational roles in multinational businesses. I am excited about the team and product offering Stormwater Systems has to support the industry growth"*.

We are excited to have Philip join us and know he will be warmly welcomed by our clients!

Project Manager of the Month!

We think it is important to reward hardworking people with great attitudes. We are excited to announce our new 'Project Manager of the Month' award!



This month, Mark Bunguard from Mike Greer Homes was recognized as Project Manager of the month! His consistent onsite communication and professionalism stood out by a mile. Nothing was too difficult in Mark's eyes, making him a pleasure to deal with! Thank you Mark for everything you do!

We look forward to the next projects with him and Mike Greer Homes.

Fancy winning yourself \$100 Mitre10 gift card?

Check out our newsletter next month to see if you are our lucky winner!

We've Outgrown Our Premises Again!

We moved to our current premises in Avondale less than 6 months ago and have already outgrown it! We will be staying in Avondale, but moving even closer to the North-Western motorway. We will be right next to the Patiki Road westbound on ramp! We will be operating from 74 Patiki Road in June. We have loved working out of our shared office space at Colony in Avondale and it will be sad to leave!



If you or anyone you know is looking for a light, clean desk or anything up to 200m2 of office space and may be interested in joining a very cool bunch of growing businesses, please get in touch!

[Checkout Colony](#)

Double Decker!



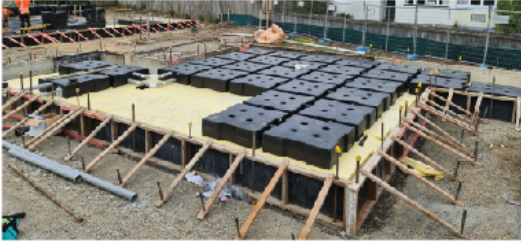


Double-deck installation! An overland flow path runs right through the middle of a Mike Greer Homes property in Overlea, making installing water tanks a hassle. Overland flow paths are the routes water takes when man-made drainage systems are overloaded. Our Aquacomb pods are the only solution our Mike Greer Homes could find due to the site being almost impossible to install above and below-ground tanks on. A deck was built over the overland flow path for the Aquacomb pods to sit on, then a second deck was built on top of that for the homeowner to enjoy. The low profile of the Aquacomb pods allowed this 2 layer deck installation to work. What a luxurious life these Aquacomb pods are going to live!

Installer Training



Our Operations Manager, Roger, flew to Christchurch this month to train our new Aquacomb Approved Installers from



Tuffnell Drainage on a Kainga Ora development.

Roger and Tuffnell Drainage installed two lots of water storage - 14,350L in one lot and 11,200L in another. That's a total of 25,550L of Aquacomb water storage installed and two lots of pressure tests in just one day!

Are you interested in becoming an Approved Aquacomb Installer too?

I'm interested!

Dam they're low!

Have you seen how low the dams in the Waitakere Ranges are? The five dams in the Waitakere Ranges are currently sitting at 38%-53% capacity.

A staff member visited the Upper Nihotupu Dam last weekend and was shocked to see how low it is! Check out the Upper Nihotupu Dam in July 2020 compared to last weekend!

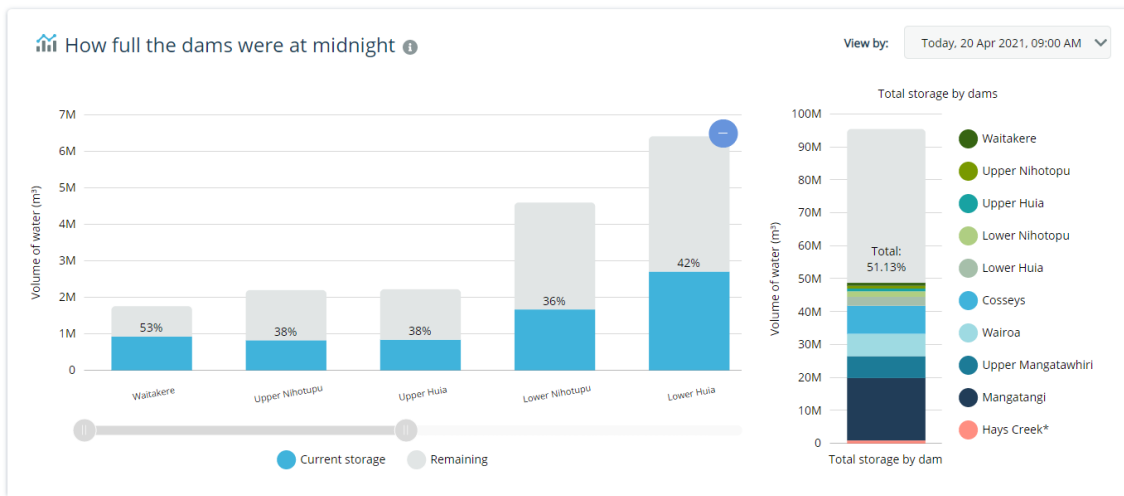
With winter approaching, it is a great time to start looking at rainwater harvesting on your property. You'll be guaranteed to have water to wash your car and boat all year round - even when water restrictions are in place!



UPPER NIHOTUPU DAM 18/07/2020



UPPER NIHOTUPU DAM 17/04/2021



Graph Source: Watercare (2021)

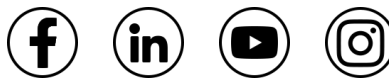
Check out our water tanks now!

Come and Grow With Us!

We are always looking for great people to join our team. If you're looking for a new challenge in a team that is positive, fun, innovative and rewards success, get in touch!

North & West Auckland Territory Manager

Find Out More



Get Now